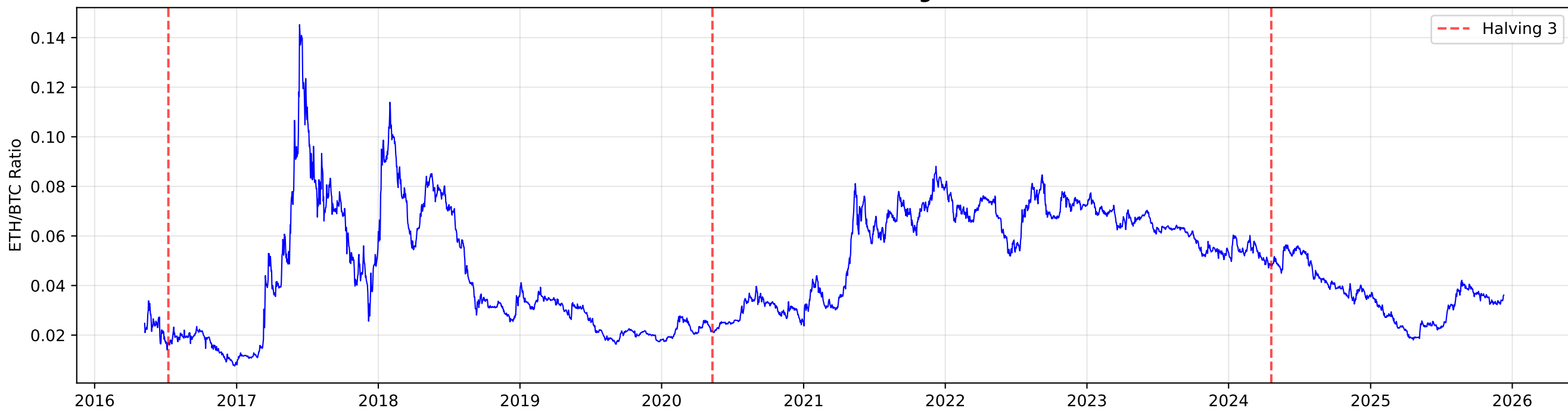


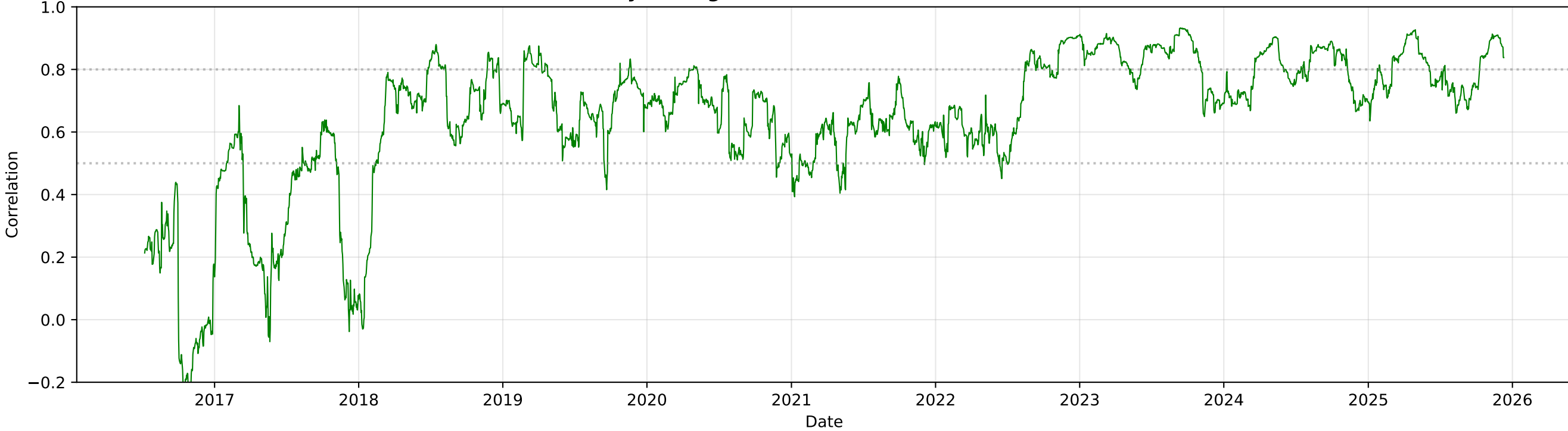
**ETH/BTC Ratio with Halving Events**



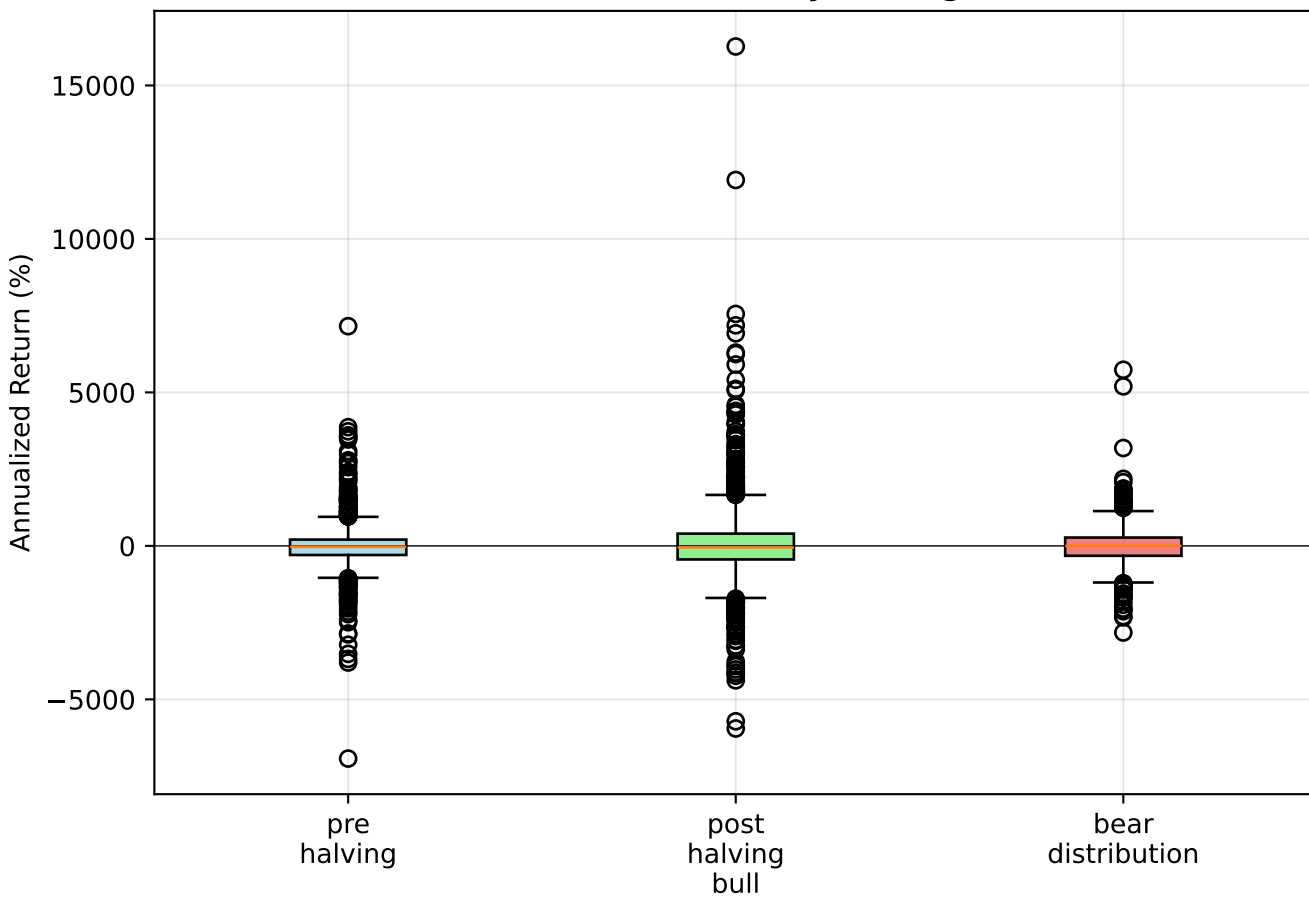
**BTC Dominance**



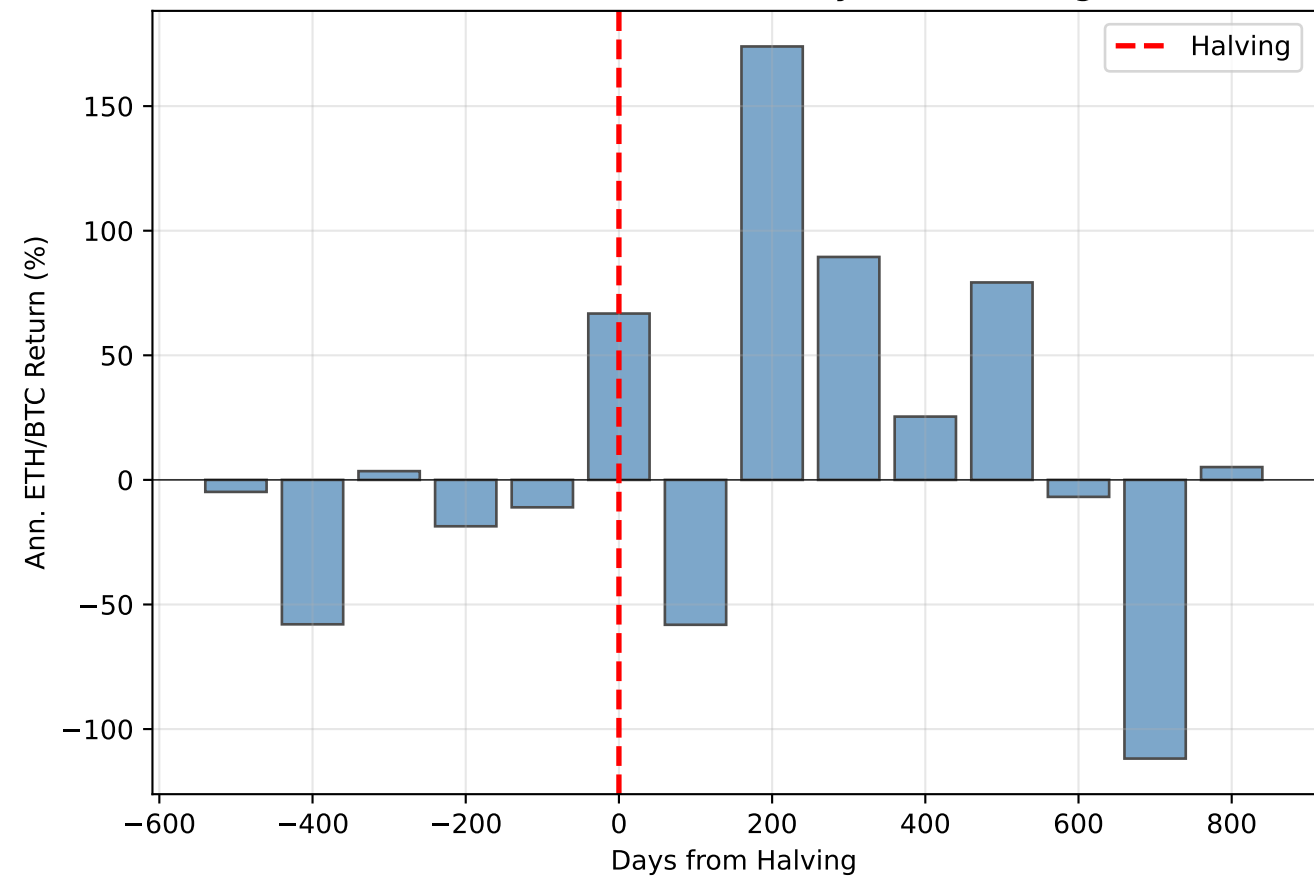
**60-Day Rolling Correlation (ETH vs BTC Returns)**



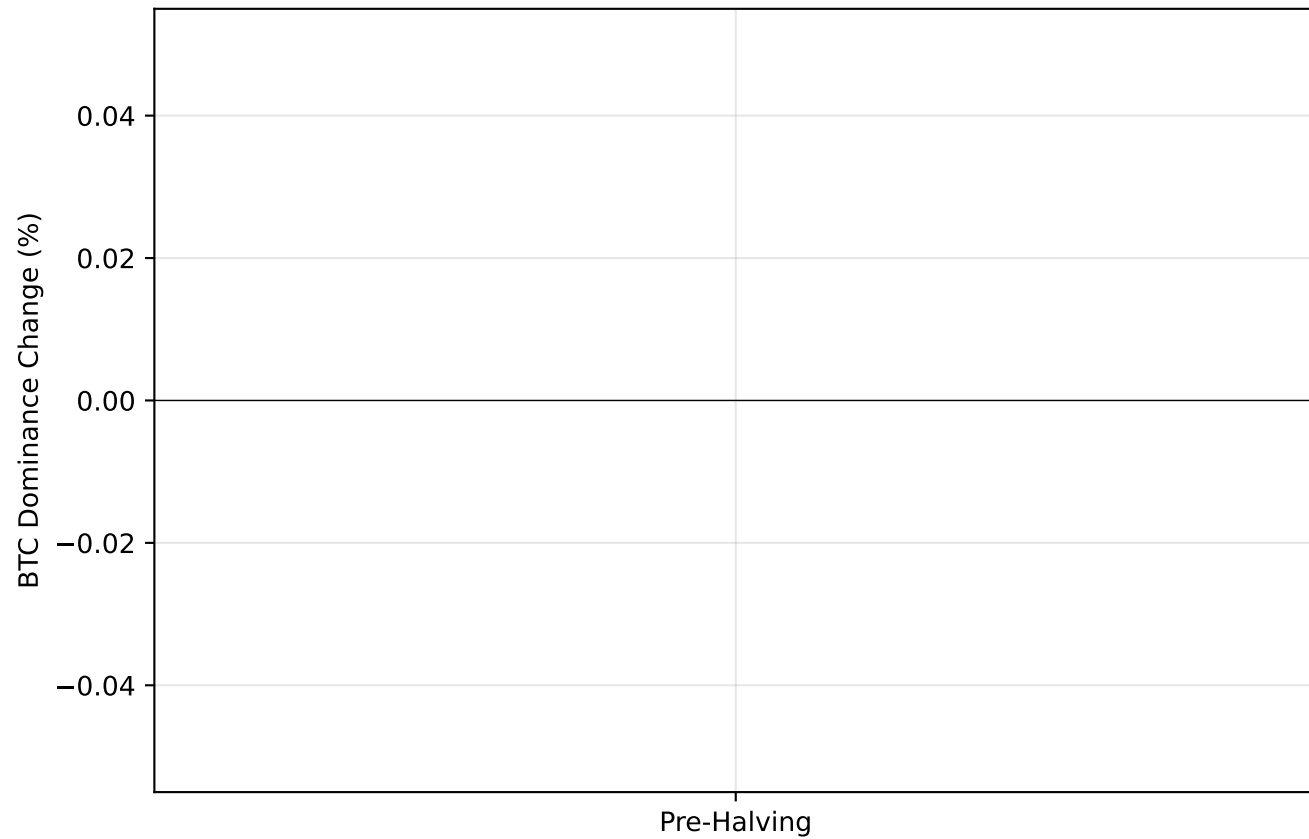
**ETH/BTC Ratio Returns by Halving Phase**



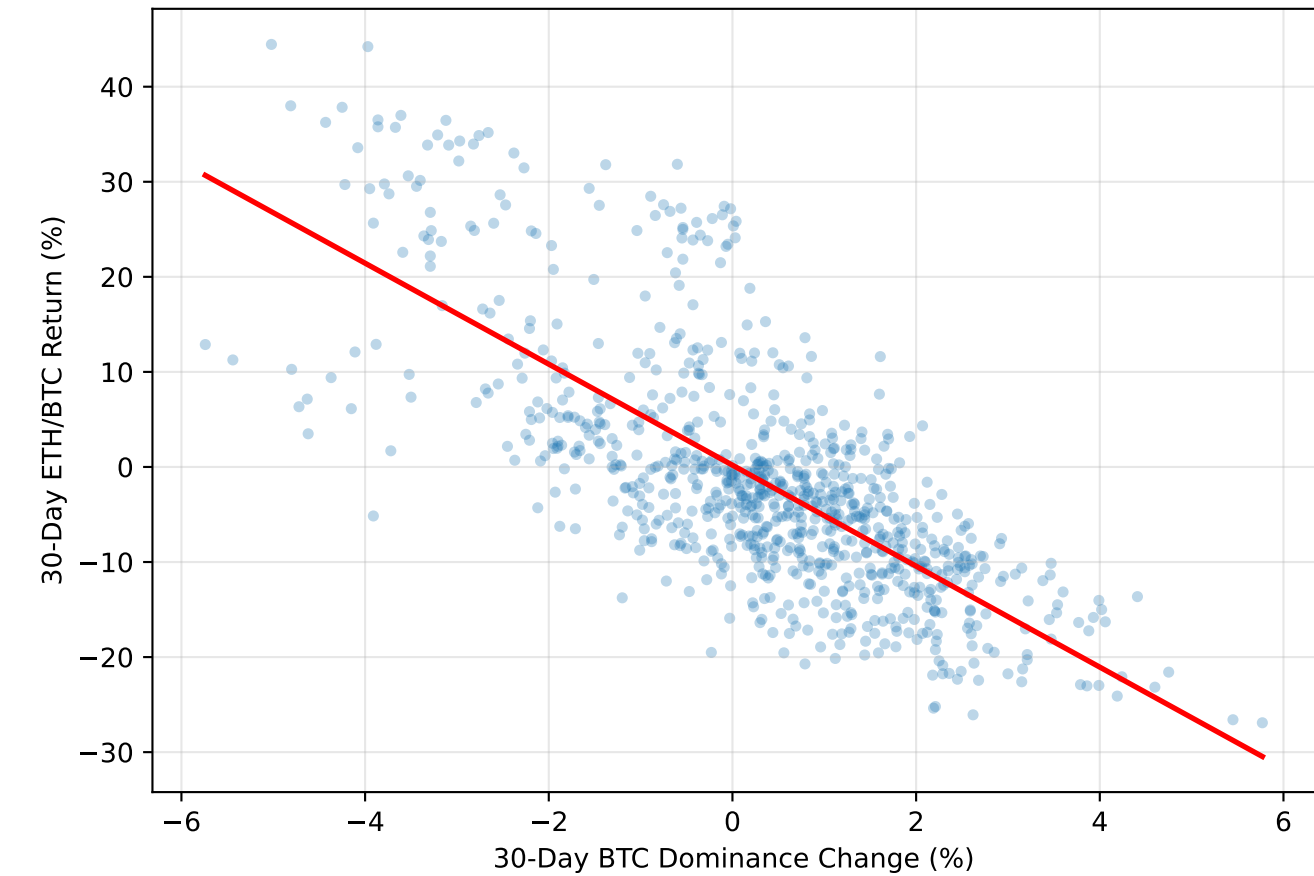
**ETH/BTC Performance vs Days from Halving**



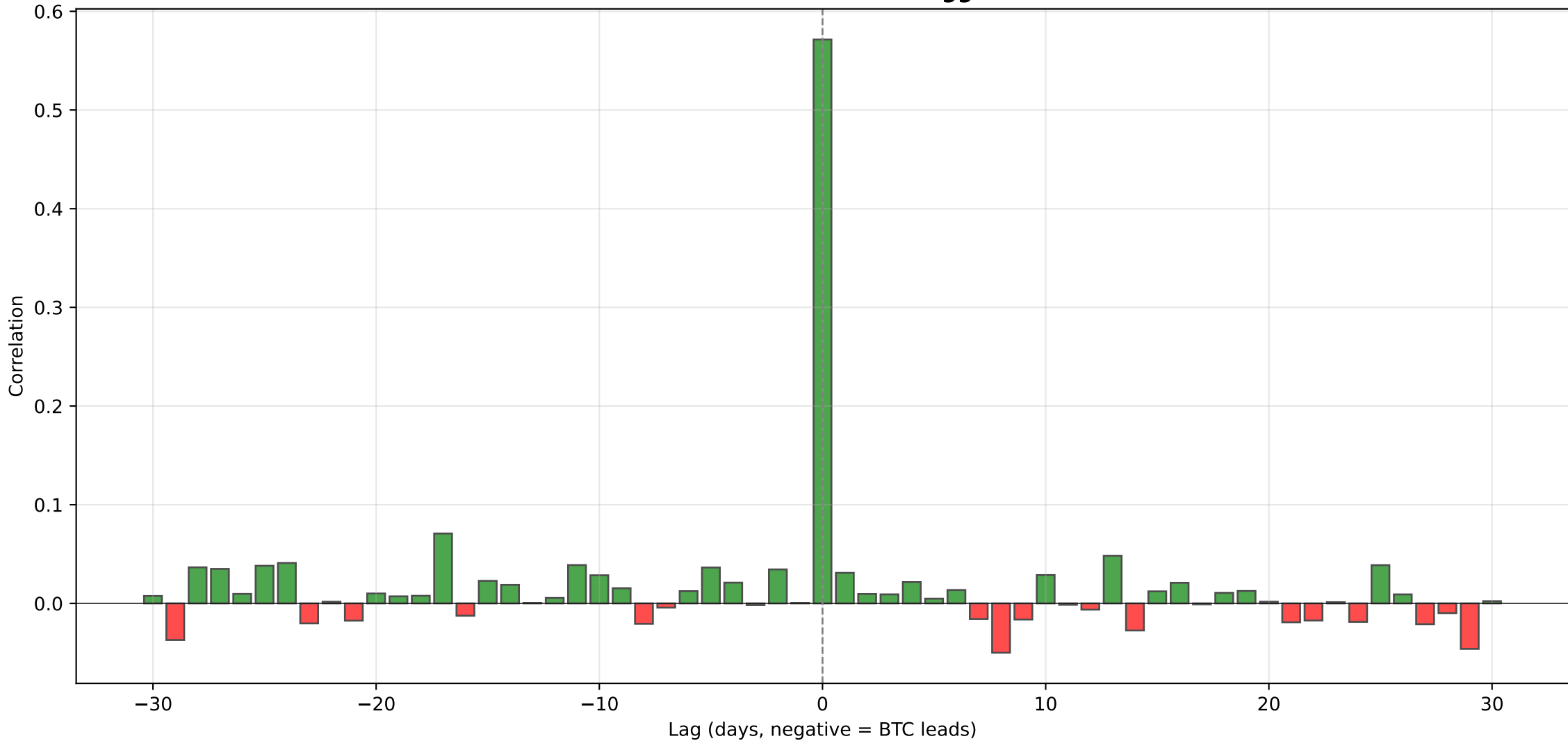
**BTC Dominance Change by Phase**



**BTC Dominance vs ETH/BTC ( $r=-0.73$ )**



**Cross-Correlation: ETH Returns vs Lagged BTC Returns**



STUDY 1: ALT SEASON TIMING ANALYSIS - SUMMARY

=====
EXECUTIVE SUMMARY
=====
RESEARCH QUESTION: When does 'alt season' occur and what drives ETH?
KEY FINDINGS:
1. ETH-BTC CORRELATION: Mean rolling correlation: 0.644 Range: -0.320 to 0.933 → ETH is highly correlated with BTC but correlation varies
2. ALT SEASON BY HALVING PHASE: Pre Halving: Ann. Return: -13.7% Sharpe: -0.29 Post Halving Bull: Ann. Return: 61.3% Sharpe: 0.80 Bear Distribution: Ann. Return: -15.0% Sharpe: -0.35
3. COINTEGRATION: coint_log_eth_log_btc: No (p=0.1786) coint_log_eth_M2SL: No (p=0.2414)
4. LEAD-LAG RELATIONSHIP: Synchronous movement (r=0.571)
=====
CONCLUSIONS:
=====
<ul style="list-style-type: none"><li>• Alt season (ETH outperformance) most likely in POST-HALVING BULL phase</li><li>• BTC dominance drops signal alt season onset</li><li>• ETH and BTC are highly correlated but NOT cointegrated</li><li>• BTC typically leads ETH by 0-2 days</li><li>• Macro factors (M2, liquidity) have secondary influence</li></ul>
TRADING IMPLICATIONS:
<ul style="list-style-type: none"><li>• Increase alt exposure 3-6 months after halving</li><li>• Watch BTC dominance for rotation signals</li><li>• ETH beta to BTC is ~1.0-1.2 historically</li></ul>